

# Hammermill



## Application

Poeth hammermills are specially designed for the grinding of raw materials in the feedmill and associated industries.

## Operation

A shaker or fully automatic drum-feeder doses an as large as possible quantity of the material into the mill where it is finely ground through the breaker plates and perforated screens. Meal discharge occurs via a separate high pressure fan, or by a mechanical conveying system, with a medium pressure fan.

## Construction

- Strong attractively styled welded housing with large access doors
- Rotor mounted on a robust shaft on ball bearings
- Dynamic balanced motor
- Mill and motor are mounted on a platform with vibration absorbers
- All worn parts can be easily replaced
- Permanent magnet
- Stone catcher

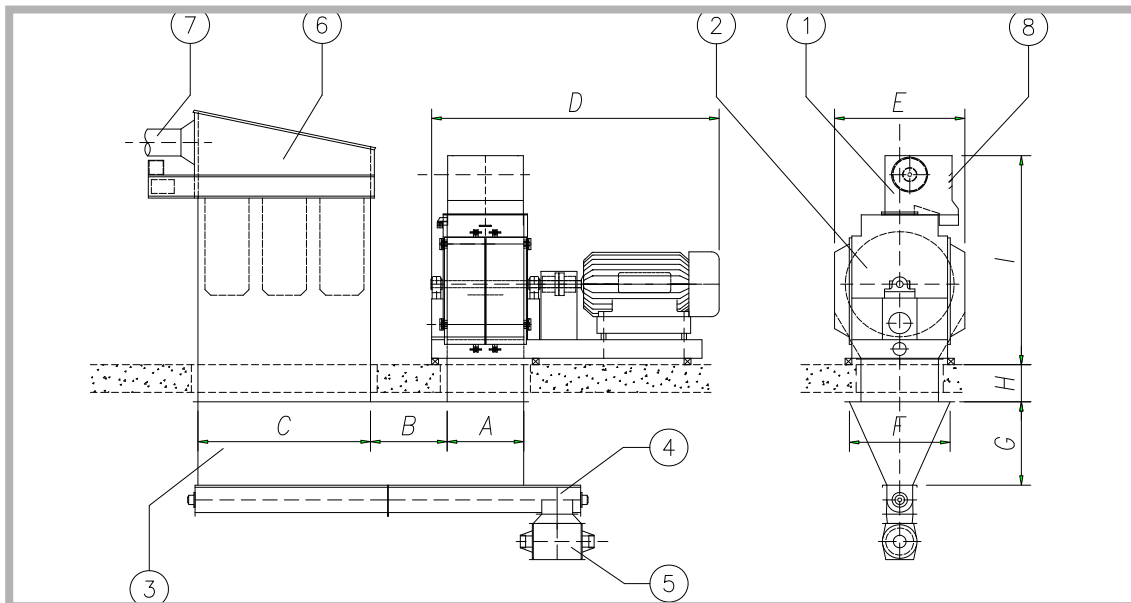
## Benefits (P15)

- Low noise level
- Two turning directions
- Quick changing of hammers
- High efficiency
- Operating speed 90 m/sec
- Low dust emission
- Low maintenance costs
- Electric control system

## Optional extras

- Revolution counter with electric pneumatic locking of the doors
- Brake on clutch
- Temperature gauge for the bearings





## P15 type

- |                            |             |
|----------------------------|-------------|
| 1. Drumfeeder              | 5. Air-lock |
| 2. Hammermill              | 6. Filter   |
| 3. Discharge-bin           | 7. To fan   |
| 4. Discharge-screwconveyor | 8. Suction  |

## Spec's single & double hammermill

Type	A	B	C	D	E	F	G	H	I
P15/400S	400	500	1200	2100	1400	1150	900	400	2190
P15/600S	600	500	1200	2400	1400	1150	900	400	2190
P15/800S	800	800	1800	3000	1400	1150	900	400	2300
P15/1000S	1030	1000	2400	3250	1400	1150	900	400	2300
P15/400D	650	500	1200	2350	1400	1150	900	400	2190
P15/600D	930	500	1200	2730	1400	1150	900	400	2190
P15/800D	1170	800	1800	3370	1400	1150	900	400	2300
P15/1000D	1440	1000	2400	3660	1400	1150	900	400	2300

Type	Drive power (kW)	RPM	Sieve area (m <sup>2</sup> )	Number of hammers	Gd <sub>2</sub> (kgm <sup>2</sup> )	Suction (m <sup>3</sup> /min/ Kw)
P15/400S	75-110	750/1500	1,2	72	44	0,75
P15/600S	110-160	750/1500	1,8	112	64	0,75
P15/800S	160-250	750/1500	2,4	152	85	0,75
P15/1000S	220-315	750/1500	3,0	192	105	0,75
P15/400D	75-110	750/1500	0,7/1,2	40/72	70	0,75
P15/600D	110-160	750/1500	1,0/1,8	56/112	100	0,75
P15/800D	160-250	750/1500	1,1/2,4	64/152	128	0,75
P15/1000D	220-315	750/1500	1,2/3,0	72/192	148	0,75